

AVID Guide for  
AMA Workflow

# CANON XF

Media Composer 6  
Symphony 6  
NewsCutter 10

# Avid Editing Systems

## AMA for CANON XF

Features in Media Composer 6,  
Symphony 6, NewsCutter 10 and later.

---

### ACKNOWLEDGEMENTS

I wish to acknowledge the advice, feedback and support of the following people who have given freely of their time and advice. I am responsible for the accuracy of the content, and any errors or omissions are mine alone.

Robert Russo  
Avid, Burlington, US

Randall Martens  
Avid, Burlington, US

Kris Fong  
Avid, Los Angeles

---

### CORRECTIONS AND SUGGESTIONS

Feedback, advice and corrections are always appreciated.  
CANON@paul-sampson.ca

---

**Be sure to visit**  
**[WWW.AVID.COM/AMA](http://WWW.AVID.COM/AMA)**

Version 5 June, 2013

© COPYRIGHT Paul Sampson 2013

all rights reserved, including the right of  
reproduction in whole or in part in any form

# Contents

**INTRODUCTION ..... 4**  
**AMA CANON SUPPORT ..... 4**  
**CANON PRODUCTION SUPPORT ..... 8**  
**REFERENCES..... 8**

## Introduction

AMA (Avid Media Access) is the Avid architecture in Media Composer, Symphony, and NewsCutter software that allows you to link to file-based media for use instead of ingesting it first. It can significantly speed up your tapeless workflow by enabling you to directly access material—without transcoding, capturing, or importing—prior to editorial. This document covers how to link to Canon XF files using your Avid editing software.

This is a supplementary guide to the *AMA Master Guide*, which provides detailed information about AMA, its workflows, and how to use its features. Be sure to read the *AMA Master Guide* first before proceeding with the guide you're reading now, which covers the specifics of using Canon XF within the AMA architecture.

### Other AMA resources

In addition to the *AMA Master Guide* and this document, here are other resources you may find useful:

- **Canon XF Plug-in Guide**  
The plug-in, which you must install (visit [www.avid.com/AMA](http://www.avid.com/AMA) and select the Plug-ins tab), has an accompanying guide with details for its use
- **Avid Editing Guide for Your Editing System**  
This guide comes with your editing software, and can also be downloaded from the Avid Knowledge Base, [www.avid.com/support](http://www.avid.com/support)
- **Avid Editing Application Help**  
This is, in effect, the Avid application manual online, accessible from your editing computer; the Help menu contains all the information in the official manual, and is easily accessible to answer your questions

### Who am I?

I am Paul Sampson, a freelance trainer, an Avid Certified Instructor (ACI) and an Avid Certified Support Rep (ACSR) living in Canada. I have experience with many clients, different environments and a variety of hardware. Every week I am at a different facility assisting with training and workflow within the Avid environment.

## AMA Canon Support

Media from Canon products is supported by three different AMA plug-ins, so let's first make sure that you're using the right plug-in and reading the correct guide for the media you have.

**QuickTime:** *QuickTime* movies shot on Canon cameras are supported by the AMA QuickTime plug-in. Canon DSLR cameras, such as the Canon EOS 7D and Canon EOS 5D Mark II, produce QuickTime movies. The consumer ELPH and PowerShot digital camera lines also record H264 .mov (QuickTime) files. If you have this type of video, you can use AMA to link to the footage without any extra plug-ins, as the QuickTime AMA plug-in gets installed with your editing application. See the *AMA QuickTime* guide for help with this format.

**Canon camcorders:** Cameras in the Canon VIXIA line and the professional XA-10 record use AVCHD technology. To access and edit video from these cameras using AMA, you will need to download and install the AVCHD AMA plug-in from the AMA webpage ([www.avid.com/AMA](http://www.avid.com/AMA)). See the *AMA AVCHD* guide for help with this format.

**Canon XF cameras:** Currently the Canon XF100, XF105, XF300, XF305, as well as the Canon Cinema EOS C300 and C300 PL, cameras shoot Canon XF media. If this is what you've got, you're in the right place. Be sure to download the Canon XF AMA plug-in from the AMA webpage ([www.avid.com/AMA](http://www.avid.com/AMA))—we'll show you how to install it next.



**CANON EOS C300**



**CANON XF305**

The files recorded in Canon XF-enabled cameras are 8-bit, MPEG-2 Long GOP in an MXF OP1a wrapper. Files contain four audio channels, and three XF formats are in use:

50 Mbps CBR	4:2:2	1920 x 1080 1280 x 720
35 Mbps VBR	4:2:0	1920 x 1080 1280 x 720
25 Mbps CBR	4:2:0	1410 x 1080

Canon XF recordings are captured on Compact Flash (CF) cards. Each camera can hold two CF cards, and a single recording can span from one card to the other. If both cards are linked into your editing system at the same time, any spanned clips will appear as a single clip in your Avid editing software.



Note that each of these cameras also takes a single SD type card. These cards are for recording still images with the camera—they never contain video.

### Installing the Canon XF plug-in

As we mentioned before, you'll find links to all manufacturers' AMA plug-ins at [www.Avid.com/AMA](http://www.Avid.com/AMA) (under the "Plug-ins" tab).

**Important**—You'll need to not only download and install the Canon XF AMA plug-in, but also the MXF AMA plug-in, as Canon XF support requires both—not just the Canon XF plug-in alone.

Please note that the plug-in does not support Canon's True 24 (24.00) framerate from its EOS 300 cameras, but will support the camera's 23.98p framerate.

### Canon XF linking and importing

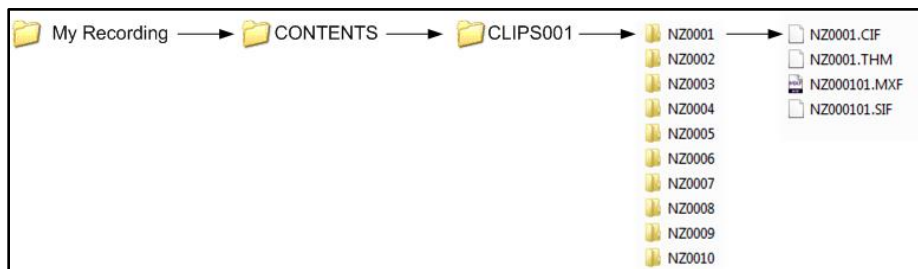
You can link to Canon XF material using `Link To AMA Volume`. You can also link to individual MXF files using `Link To AMA File(s)...` Or import Canon XF footage file by file, though accessing this footage, file by file, would be very inefficient since each MXF file is in a separate folder, as we shall discuss. After linking to Canon XF footage, you may consolidate the footage or transcode the footage into local or shared storage.

- Link to File(s)...** ✓
- Link to Volume...** ✓
- Import** ✓
- Consolidate** ✓
- Transcode** ✓

Linking can be done directly to the camera or to a CF card reader. You may also link to a copy of the CF card contents on an attached media drive.

### Location of recordings

Knowing the location of the recordings on the CF card is not essential if you're linking by volume, but if you're linking by file, you need to know that all of the recordings are in the CONTENTS folder. When copying the contents from a card, you'll need to copy the CONTENTS folder to your remote media (into a folder you create and name).

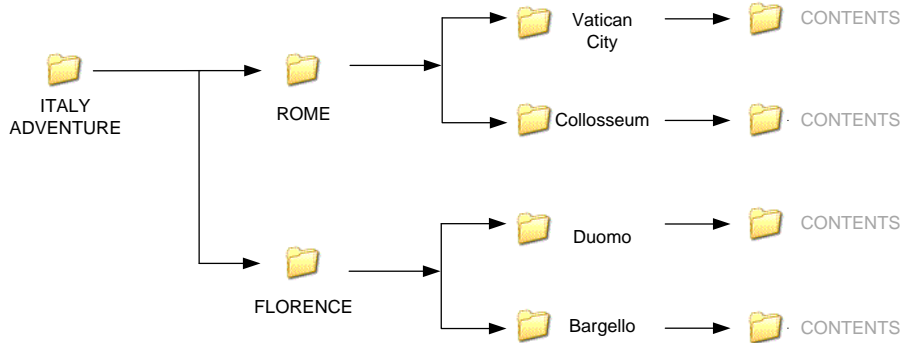


### Copying CF card contents

Create a folder to hold your card contents, and name it so you know what the contents are. This name can become the bin name if you choose that option at the time you perform the linking. Then copy the CONTENTS folder—in its entirety—into this folder.

Using `Link to Volume...` will enable you to link to a CONTENTS folder up to three folders down from the one you choose. This gives you the opportunity to organize multiple card images into a folder structure that is both logical and flexible. It's logical because you can organize the images in an easy to follow hierarchy. It's flexible because you can link to a folder high up in the hierarchy to mount many volumes at once, or link to a folder lower down to link specific folders.

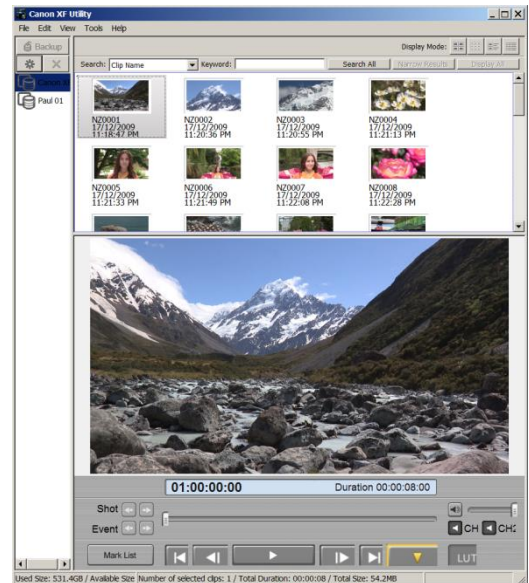
To illustrate in our example below, if you link to ITALY ADVENTURE, you'll find all four CONTENTS folders between ROME and FLORENCE. If you link to ROME, you're linked to just the two CONTENTS folders for that city only. Link to VATICAN CITY to mount just that single card image.



## Canon Production Support

Available for Mac and PC, Canon offers the *Canon XF Utility* from their website. With this software application, you can:

- Screen Canon XF cards and copies of cards (Canon calls card copies *Virtual Media*); you can review media in a small window, as shown here, or go full screen
- Export a clip as an MXF file that's compliant with Sony MXF and capable of screening and being imported into the Sony Browser, as well as Avid editing systems
- Copy, writeback, move, and delete media from CF cards or Virtual Media



## References

Canon Cameras [http://www.usa.canon.com/cusa/professional/products/professional\\_cameras](http://www.usa.canon.com/cusa/professional/products/professional_cameras)